

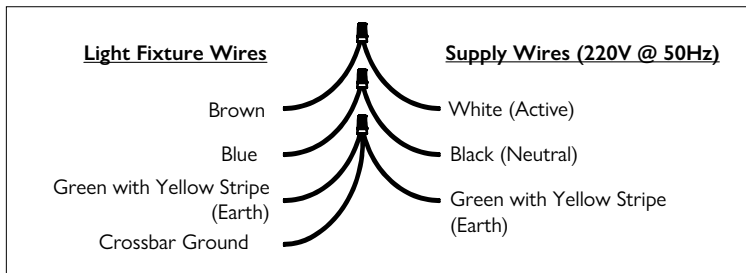
IMPORTANT - DECLARATIONS & WARNINGS

All Barn Light Australia lighting products are designed to be assembled, installed, and finished by a fully-licensed Electrician.

For outdoor ratings to be valid, junctions between the mounting surface and the luminaire must be sealed using supplied gaskets, with an outdoor-rated, UV Resistant silicon used on the mounting surfaces.

Broke something? Might have lost parts? - Call Barn Light. We've got spares. If you believe any facet, part, or component is damaged - Call Barn Light. We're here to make your job easier, both now and in the future.

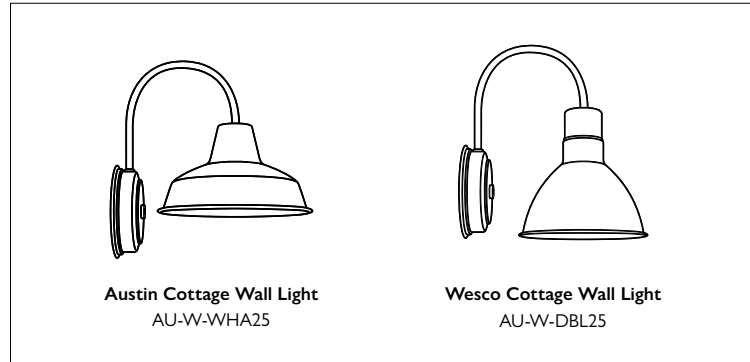
WIRING DIAGRAM - 220V / E27 MODELS



**CAUTION: READ ALL INSTRUCTIONS PRIOR TO ASSEMBLY.
INSTALLATIONS BY QUALIFIED ELECTRICIANS ONLY**

ALTERNATE FIXTURE STYLES

These instructions are designed ONLY for 220V E27/Edison Screw Wall Light variants. These instructions may cover many different product types that use the common mounting shown below.



INSTRUCTIONS - MOUNTING & WARNINGS

PART #1 - Electrical Assembly

1. Remove the supplied **Terminal Block (E)** from the **Electrical Assembly (A)** and utilise in INS-0009 REV AU1 Assembly.
2. Affix Plumbers Tape / Silicon tape around threads of **Light Assembly (G)** Arm.
3. Insert the **Electrical Assembly (A)** wires through the **Mud Washer (D)** then through the **Shade (S)** and into **Light Assembly (G)** Arm.
4. Rotate² **Electrical Assembly (A)** clockwise (**Shade (S)** may spin freely) three complete turns to minimise wire tension within the **Light Assembly (G)** Arm.

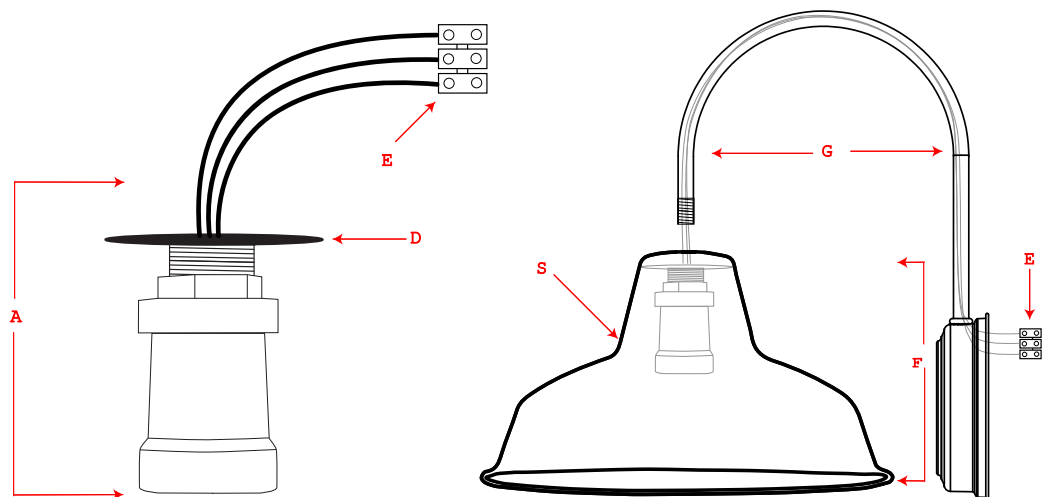
PART #2 - Electrical Assembly

This assembled Lighting Fixture shall be referred to as "**Fixture (F)**" henceforth.

5. Push **Fixture (F)** into **Fixture Assembly (F)** threads*¹ and rotate Counter-Clockwise until **Fixture (F)** is attached to **Light Assembly (G)**.
6. Ensure the **Fixture (F)** is completely attached to **Light Assembly (G)**. No visible gaps should be present, and threads completely recessed.
7. Visible / Excess Threadtape should be removed using a sharp tool, ensure you do not pierce the powdercoated finish, nor the arm whilst doing so.
8. Complete the remaining INS-0009 REV AU1 installation instructions are required.

WALL LIGHT COMPONENTS

- A) Electrical Assembly
- D) Mud Washer (1/2" x 2" x 16G)
- E) Terminal Block
- F) Fixture (Completed Part #1)
- G) Light Assembly (WBP2 Model)
- S) Shade (ie. Austin / Universal / Eclipse)



NOTES

- *1 - If required, reapply silicon tape to nipple if marked/shredded. Electrical & Shade pairing is normally a tight fit, rotating slowly while pushing is recommended to minimise silicon tape removal.
- *2 - If the lampholder "rattles" during rotation - Reaffix the internal Pan Phillips Screws securely against the die-cast base. Do not over-torque when using high wattage globes (heat expands the ceramic, causing cracking).